



CITY OF CLEVELAND
Mayor Justin M. Bibb

2026 City of Cleveland

Landmarks Commission

April 9th, 2026

Julie Trott, Commission Chair
Daniel Musson, Secretary





CITY OF CLEVELAND
Mayor Justin M. Bibb

Certificates of Appropriateness

April 9th, 2026



Case 26-024

Certificate of Appropriateness

Lorain Variety Historic District

Cleveland Public Library: Eastman Branch 11602 Lorain Avenue

"PRISM" Mural

Project Representatives: Ahlon Gonzales, L.A.N.D. Studio

Ward 12: Councilmember Shah





PRISM

Seeing Beyond
Mass Incarceration

**Cleveland Public Library
Eastman Branch Mural**

PRESENTED BY:

L | A | N | D



WHAT IS PRISM?

PRISM: Seeing Beyond Mass Incarceration facilitates the creation of public art and programming to further a more imaginative and expansive dialogue around the realities of mass incarceration, efforts to end this societal ill, and alternative solutions to safety.

PRISM is designed and managed by LAND studio and Shooting Without Bullets and made possible through funding from the Art for Justice Fund, via the Ford Foundation, the George Gund Foundation, the Fowler Family Foundation, and the Nord Family Foundation.

Project Goals



EDUCATION

of the public around the origins, nature, and alternatives to mass incarceration in Cleveland and beyond



INCLUSION

of Cleveland community members impacted by mass incarceration in library space and art making processes



ADVOCACY

upporting narrative and policy change in issues of mass incarceration in Cleveland



ACTIVATION

of CPL outdoor space in alignment with strategic priority to create campuses



CONNECTION

Between CPL, artists, impacted communities, and the community at-large



EXPLORATION

of models related to the use of art to further justice and the role of libraries in a just society



CHALLENGE

Notions of neutrality related to the role of libraries and inevitability related to the existence of prisons

“The Library has a long history of integrating artwork in our locations and making space to uplift all voices. We hope PRISM offers an opportunity for artists to engage with the people we serve and inspire Clevelanders to consider our pathways to a more just future”

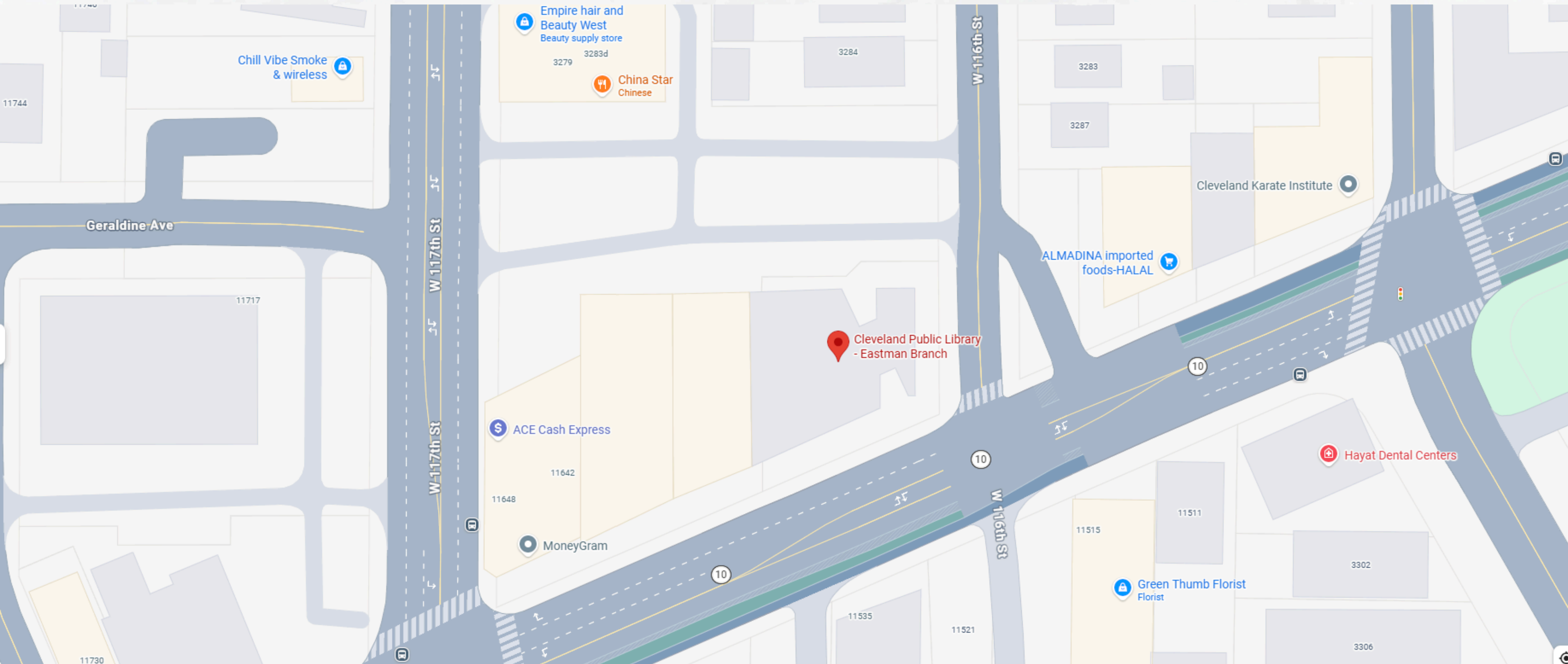
**-Felton Thomas, Jr.
Executive Director & CEO
Cleveland Public Library**

WHAT IS PRISM?

- **8 INSTALLATION PROJECTS**
 - **MLK (2)**
 - **RICE**
 - **HOUGH**
 - **UNION**
 - **EASTMAN**
 - **LORAIN**
 - **MAIN**
- **PROGRAMMING**
- **ART WALLS (3)**

EASTMAN BRANCH

11602 LORAIN AVE, CLEVELAND, OH 44111



EASTMAN BRANCH

 CLEVELAND
PUBLIC LIBRARY
EASTMAN BRANCH



FRONT ENTRANCE VIEW



BACK ENTRANCE VIEW



STREET VIEW



ABOUT THE ARTIST



VICTOR "MARKA27" QUINONEZ

Victor "Marka27" Quiñonez is an acclaimed international street artist recognized for blending art forms such as graffiti, vinyl toys, and fashion with art activism. Drawing inspiration from Mexican Masters and his heritage, his works reflect empowerment and representation of marginalized communities. Known for his unique "Neo Indigenous" style, Marka27 excels in various mediums including murals, paintings, and private commissions. A pioneering figure in graffiti and street art, he is highly sought-after worldwide.

Alongside his wife Liza, Marka27 operates the award-winning "Street Theory Gallery" in Brooklyn, NY, where they both reside and work.

PRECEDENT MURAL WORK



ARTIST RETREAT

Selected artists participated in a multi day artistt retreat where they conducted site visits, spoke to cpl stakeholders, and listened to and learned from social justice practioners and community members.



“MI ORGULLO NO ES CRIMEN”

“My PRIDE is not a CRIME”



LABEL PLACEMENT



ARTIST STATEMENT

"I wanted to create a composition and use images that could speak to many communities. The images are large and bold, but can be understood on many levels. I wanted to share that we all face the same challenges and struggles no matter what city we reside in.

I took the photos with a renowned photographer and friend Moses Mitchell for a body of work I'm currently exhibiting. The two women agreed to be photographed after I spoke with them and explained my artwork and intentions. They are anonymous from south and central america and were photographed in NY.

I would love for Cleveland to be the first city to use these images in a mural. In almost every case of meeting street vendors they are %80 of the time woman with children selling goods out of carts and coolers"

MATERIALS AND MAINTENANCE

- The mural is expected to be permanent (up to 10 years)
- The wall will be primed using LUXON masonry primer which protects the mural from peeling and gives it a surface for bright colors.
- The artist will be using exterior latex premium grade paint from Sherwin Williams and European Spray Paint from Spain especially formulated for exterior murals.
- The mural will receive a UV protection coat.
- The artist will provide a color code for maintenance and upkeep.
- For small fixes (graffiti, etc.) we would give artist right of first refusal to be hired to fix the artwork.

Case 26-025

Certificate of Appropriateness

Cultural Gardens

Scottish Cultural Garden East Boulevard

Phase One Construction

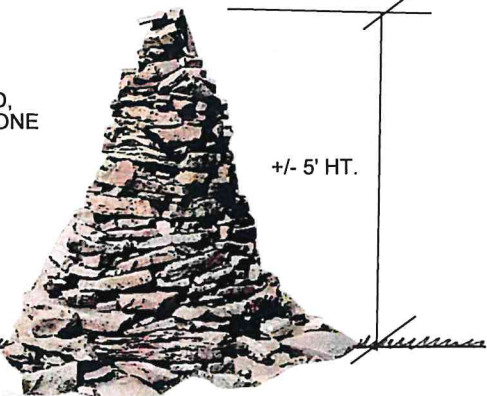
Project Representatives: James McKnight, Landscape Architect

Ward 9: Councilmember Conwell

Previous Case 23-047



STACKED,
SANDSTONE
RUBBLE



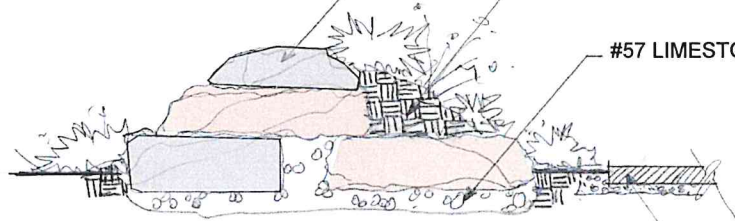
+/- 5' HT.

SANDSTONE CAIRN

NATIVE ROUGH SANDSTONE-STACKED

SOILBACKFILL-INSERT HEATHER PLANTINGS

#57 LIMESTONE



SANDSTONE LEDGE ROCK OUTCROP

BLUESTONE--SWEEP SAND
INTO ALL JOINTS.

5" PERMALOC EDGE AT
PERIMETER OF PAVERS

COMPACTED
LIMESTONE SCREENINGS
DEPTH VARIES
COMPACTED SUBGRADE.

BRICK PAVERS--
PINE HALL ENGLISH EDGE
FULL RANGE BRICK

FLAGSTONE & BRICK PAVING AT TARTAN PLAZA

SCALE: 1"=1'-0"

TARTAN PLAZA PAVING

BRITISH
CULTURAL
GARDEN

EXISTING
SIDEWALK

120 V ELECTRICAL POWER
1 1/2" PVC CONDUIT

FUTURE
BAGPIPER
STATUE

TARTAN PLAZA
BLUESTONE, SANDSTONE,
UNIT PAVER PAVING PATTERN

DUPLEX
OUTLETS

RECOGNITION WALK

5' WIDE
BLUESTONE
PATH

EXISTING POLE,
W/ FLOODLIGHTS
EXISTING
POWER DROP

SANDSTONE
LEDGEROCK
OUTCROPS
HIGHLAND
ROCK
GARDEN

FUTURE
HERITAGE
RECOGNITION
MARKERS

FUTURE HISTORIC
FIGURE MARKERS
BUSTS

BLUESTONE
STEPPING STONES

CAIRN

FLAGPOLE

SIGN

UPLIGHTS AT SIGN,
FLAGPOLE, OAK TREES

EXISTING
SIDEWALK

EXISTING
LIBERTY OAK
ROW

5' WIDE
BLUESTONE
PATH



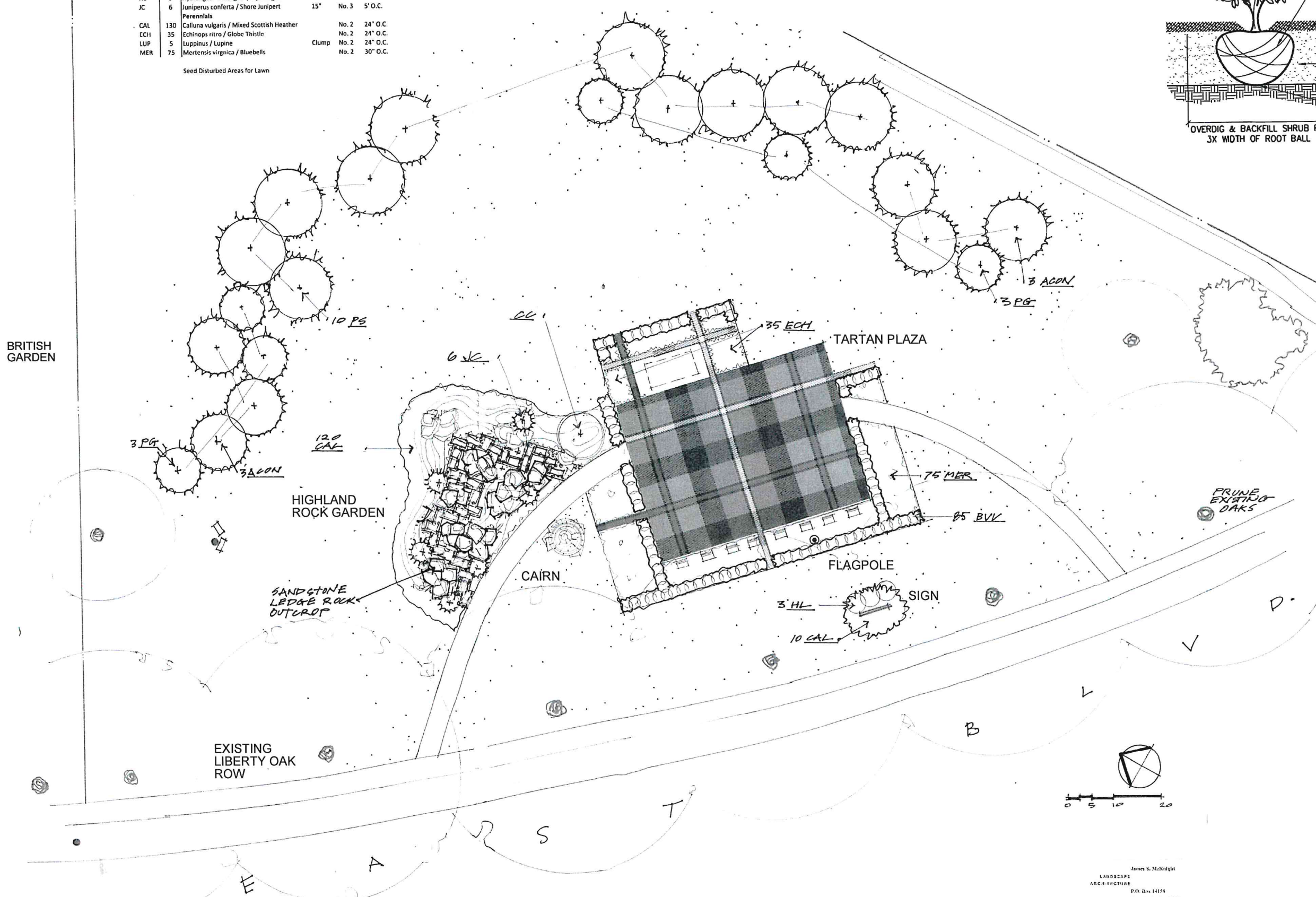
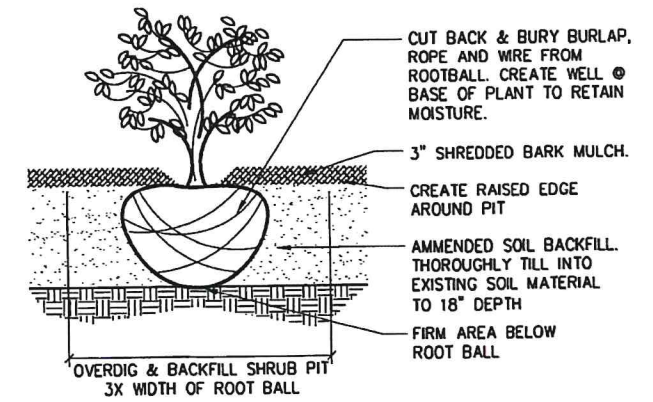
PHASE 1 LAYOUT/MATERIAL PLAN
SCOTTISH CULTURAL GARDEN
EAST BOULEVARD CLEVELAND, OHIO

James S. McKnight
LANDSCAPE
ARCHITECTURE
P.O. Box 14158
Cleveland, Ohio 44114
(216) 452-2703
jmk@jmk-landscape.com

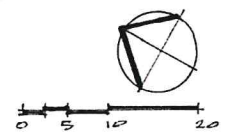
3/5/2026

Plant Schedule				
Key	Qty	Botanical / Common Name	Size	Cond. Spacing
Trees				
ACON	6	Abies concolor - Concolor Fir	8' Ht.	B&B 12' O.C.
PG	6	Picea glauca / White Spruce	6' Ht.	B&B 15' O.C.
PS	10	Pinus sylvestris / Scotch Pine	6' Ht.	B&B 20' O.C.
Shrubs				
AZ	85	Buxus "Vardar Valley / Boxwood	15"	No. 3 2' O.C.
HL	3	Hydrangea "Limelight" / Hydrangea	36"	No. 5 4' O.C.
JC	6	Juniperus conferta / Shore Juniper	15"	No. 3 5' O.C.
Perennials				
CAL	130	Calluna vulgaris / Mixed Scottish Heather	No. 2	24" O.C.
ECJ	35	Echinops ritro / Globe Thistle	No. 2	24" O.C.
LUP	5	Lupinus / Lupine	Clump	No. 2 24" O.C.
MER	75	Mertensia virginica / Bluebells	No. 2	30" O.C.

Seed Disturbed Areas for Lawn



PHASE 1 PLANTING PLAN
SCOTTISH CULTURAL GARDEN



James S. McNeilight
LANDSCAPE ARCHITECTURE
P.O. Box 14259
Cleveland, Ohio 44114
(216) 312-1-24
jmc@jmcniight.com